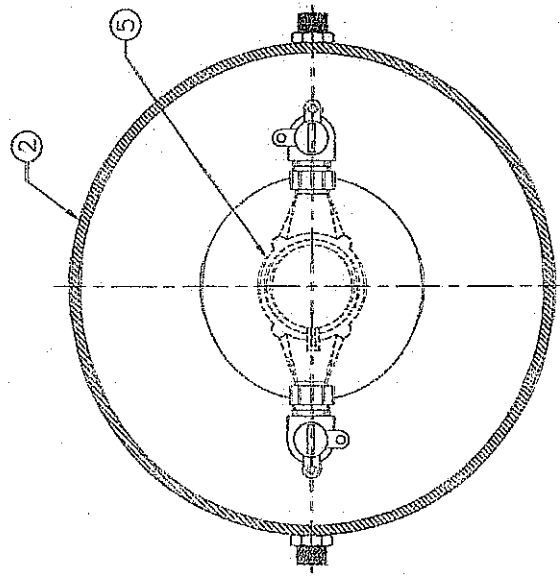


Ferguson 3845 Groveport Rd, Columbus, OH 43207 (614)-497-2323
 HD Supply 3015 E 17th Ave, Columbus, OH 43219 (614)-475-4376

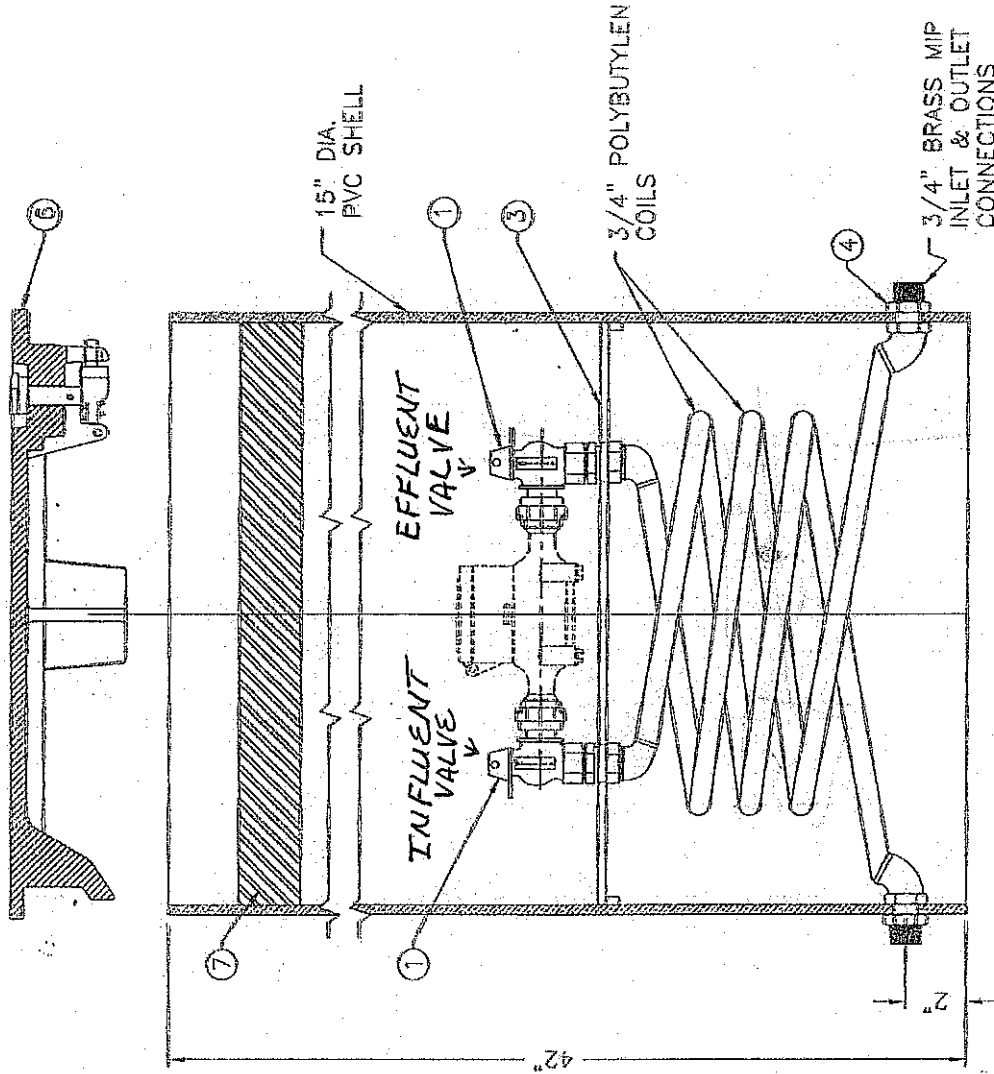
CORE MAIN

ITEM	DESCRIPTION	PART NO.	REQ'D
1	5/8" X 3/4" FULL PORT BALL VALVE	B24265N	2
2	15" SHELL SUB-ASSEMBLY		1
3	STABILIZING PLATFORM		1
4	3/4" HEX NUT		4
5	METER (NOT INCLUDED)	262924	
6	CAST IRON LID (OPTIONAL)	790022	
7	15" X 4" INSULATING PAD (OPTIONAL)		

*NOTE: METER NOT INCLUDED



TOP VIEW



FRONT VIEW

203CS15421FBSN

DESIGN	AGW	4/27/16	SCALE	NON
CHECK	BBF	4/27/16	THIRD ANGLE PROJECTION	
E.O. NUMBER			STOCK NO.	
			REV.	203CS15421F
5/8" X 3/4" FULL PORT BALL VALVE 15" SHELL SUB-ASSEMBLY STABILIZING PLATFORM 3/4" HEX NUT METER (NOT INCLUDED) CAST IRON LID (OPTIONAL) 15" X 4" INSULATING PAD (OPTIONAL)			SHEET 1 OF	

WATER PLANT 740-967-1139

Core Main
 Memorial Dr.
 Plain City 614-873-